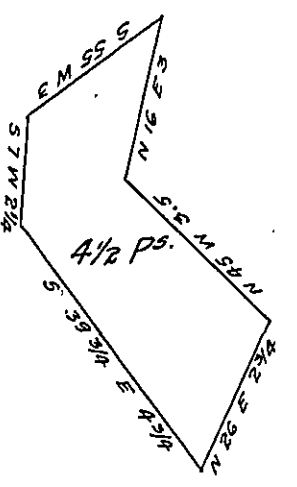


York County Shore



Lancaster County Shore

A Draught of Grape Island situate in the river Susquehanna in Conestogo township Lancaster County opposite land of Joseph Reed on the York County shore opposite land of George Stoner on the Lancaster County shore and eighty below Burkholders Island containing four perches and one half strict measure Surveyed in pursuance of a warrant dated 12th August 1818 granted to George Mundorf.

Jacob Hibshman D.S.

To Jacob Spangler Esq.
Surveyor General.

IN TESTIMONY that the above is a copy of the original remaining on file in the Department of Internal Affairs of Pennsylvania, made conformably to an Act of Assembly approved the 16th day of February 1833, I have hereunto set my hand and caused the Seal of said Department to be affixed at Harrisburg, this thirtieth day of November 1907.

Henry Houck
Secretary of Internal Affairs.